



If you answered YES to any of these questions, you should take a look at Renal PatientView:

www.renalpatientview.org

Individualised online information for renal patients

Would you like to:

- Find out your latest test results?
- Read online information about your kidney condition and treatment?
- Read letters about you from the renal unit?
- Read about renal diets?
- Check whether you are on the transplant list?
- Find any other information about kidney disease?

How does it work?

Renal PatientView takes information from your renal unit's computer system and links it to useful explanations about your kidney condition and its treatment. It shows blood test results, clinic letters and medicines (if they are on your unit's renal computer system), and much more.

Renal PatientView <small>NHS</small>												
Providing up-to-date medical information for patients and healthcare professionals												
Home	Patient Details	Patient Info	Medical Info	Results	Medicines	Letters	Contact	Help				
logged in as: log_out back to Admin Area 13 Feb 2008												
Result panels: 1 2 3 4 > <												
Date and time	Label	Urea	Creatinine	K	Ca	Alb/Ga	PO2	Hb	wbc	plate	esr/PS	
12/02/08	POST				2.37	2.31	0.81					
12/02/08	PRE				2.70	2.68	1.87	82	8.8	204		
03/02/08	POST	6.1	296	3.6					112	9.9	198	
29/01/08	POST	4.4	271	3.8	2.35	2.27	0.81					
29/01/08	PRE	18.7	842	5.2	2.67	2.63	1.81					
18/01/08	POST	5.3	229	3.6								
17/01/08	PRE	21.0	845	5.5								
15/01/08	POST	6.2	324	3.6	2.37	2.27	1.08					
15/01/08	PRE	22.4	820	6.4	2.61	2.57	2.38	127	9.9	230		
03/01/08	PRE								134	10.2	206	
18/05												
30/12/07	POST	5.4	354	3.8	2.70	2.54	1.15					
29/12/07	PRE	19.5	890	5.2	2.76	2.68	2.40	136	9.3	199		

A sample page

Who can read it?

You can, your GP can, and staff from your renal unit can. Also, you can share your password with anyone you want. So you can show it to relatives, even in other parts of the world. When you are seen at an unfamiliar hospital or surgery, you can show it to staff there, even if you are away on holiday.

Is it safe?

It is very safe. It uses security systems similar to those used for Internet shopping. If you think someone may have discovered your password, you can change it at any time. Your information only goes onto Renal PatientView at your request, and you can have all of your information removed if you change your mind.

How do I join?

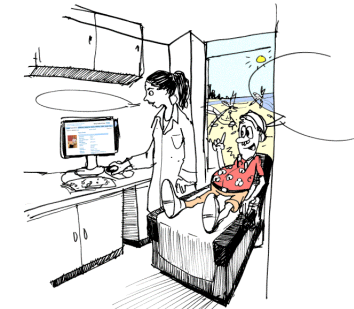
Renal PatientView is only available at participating renal units, but that is now more than half of renal units in the UK. See "Find out more".

What if I don't use the Internet?

Maybe you have a friend or family member that does? Some units may have set up a way of using the system when you visit.

What does it cost?

Nothing. It is free to patients.



Beth Shortt

Even on holiday

FIND OUT MORE

There may be a demo in your renal unit, or local information in the box below, and there are leaflets. Or ask. Or try the Renal PatientView website:

<http://www.renalpatientview.org>

You can try the system out using the test logins given via the 'demo' link at the foot of the page. Click on 'list of units' to see if yours is included or on the timetable yet.

Space for local unit information

Who has made this? Renal PatientView has been produced by RIXG, the Renal Information EXchange Group. This is a group representing patients and the entire renal team which was formed in 2003 to make advances in IT work to help renal patients. The PatientView pilot project began in 2004, funded by the Health Departments of England and Scotland. These are just some of the bodies represented on RIXG:



The Renal Association

