

# NHS Kidney Care

*enabling consistent  
implementation of the Renal  
National Service Framework*

A Strategy for 08/09 and beyond.....

# NHS Kidney Care

---

## Who are we?

- NHS Kidney Care as it is part of the NHS Diabetes and Kidney Care
- NHS Diabetes and Kidney Care has a primary function of developing a small national team with significant local presence to enable successful implementation of the Renal and Diabetes NSFs



# NHS Kidney Care

---

- To create capacity and capability to improve patient outcomes
- To enable equitable, effective and efficient kidney services.



# NHS Kidney Care

---

## **The Listening Exercise...**

From April to June 2008 the Kidney Care team initiated a Listening Exercise to understand what our stakeholders felt were important issues for a national team driving local excellence in service delivery

# NHS Kidney Care

---

## The Listening Exercise...

We drew on :

- The expertise already available
- Listened to language that the kidney community uses
- Heard about the quick wins, the local priorities and the key national issues to get right

# NHS Kidney Care

---

## **The Listening Exercise...**

We set out to identify:

- What results we are trying to deliver?
- What Impact we are trying to achieve?
- What are the core functions of the team?
- What key drivers and principles that should underpin the local infrastructure?
- What accountability arrangements are required to set the kidney care agenda
- What lessons can be learnt from existing improvement teams?

# NHS Kidney Care

---

## ○ **The Listening Exercise...**

Responses were received from:

- Professionals
- Regulators
- Influencers
- Public

# NHS Kidney Care

---

## ○ The Listening Exercise...

Knowledge Management is key

A framework for Kidney Networks is needed

Organisational boundaries shouldn't determine patient care

Choice Capacity and Empowerment are key drivers

some things are better done nationally rather than fragmented

Don't create meetings for the sake of meetings

There is already good practice out there.

we shouldn't reinvent the wheel

# NHS Kidney Care

---

## National deliverables ...

- Co-ordinating implementation of current priorities within the Renal NSF
- Support the development of metrics based on patient experience and outcomes
- Translate the implications and opportunities within the Next Stage Review

# NHS Kidney Care

---

- **Local deliverables ...**
- Link local kidney communities with SHA work streams enabling the Next Stage Review be a reality for kidney care
- Putting clinical quality at the heart of our work programme, reflecting Darzi principles
- Building local alliances of professional and patients to work collaboratively to improve the care of people needing kidney care;
- Energise service transformation and improvement through shared learning;

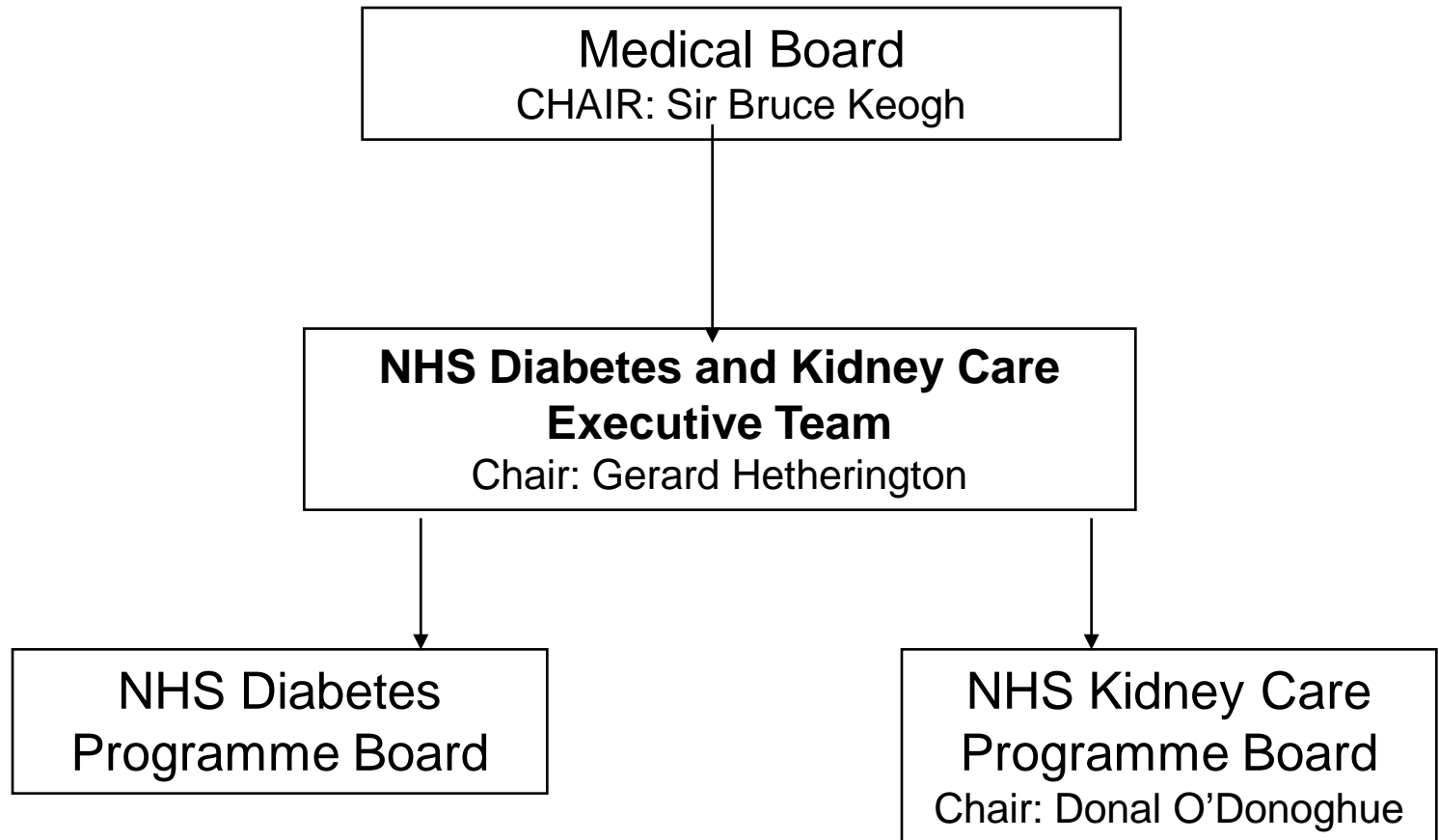


Kidney Care

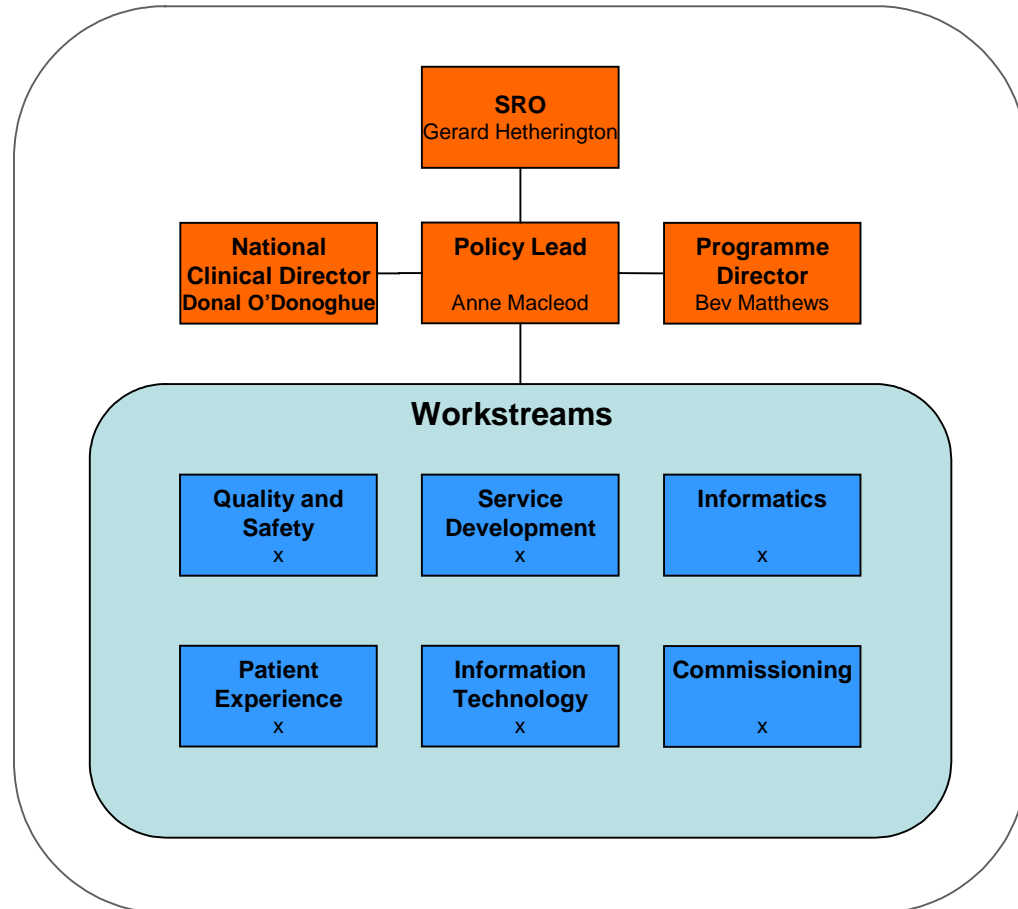
---

# NHS Kidney Care

# NHS Kidney Care



# Renal Policy Team and NHS Kidney Care

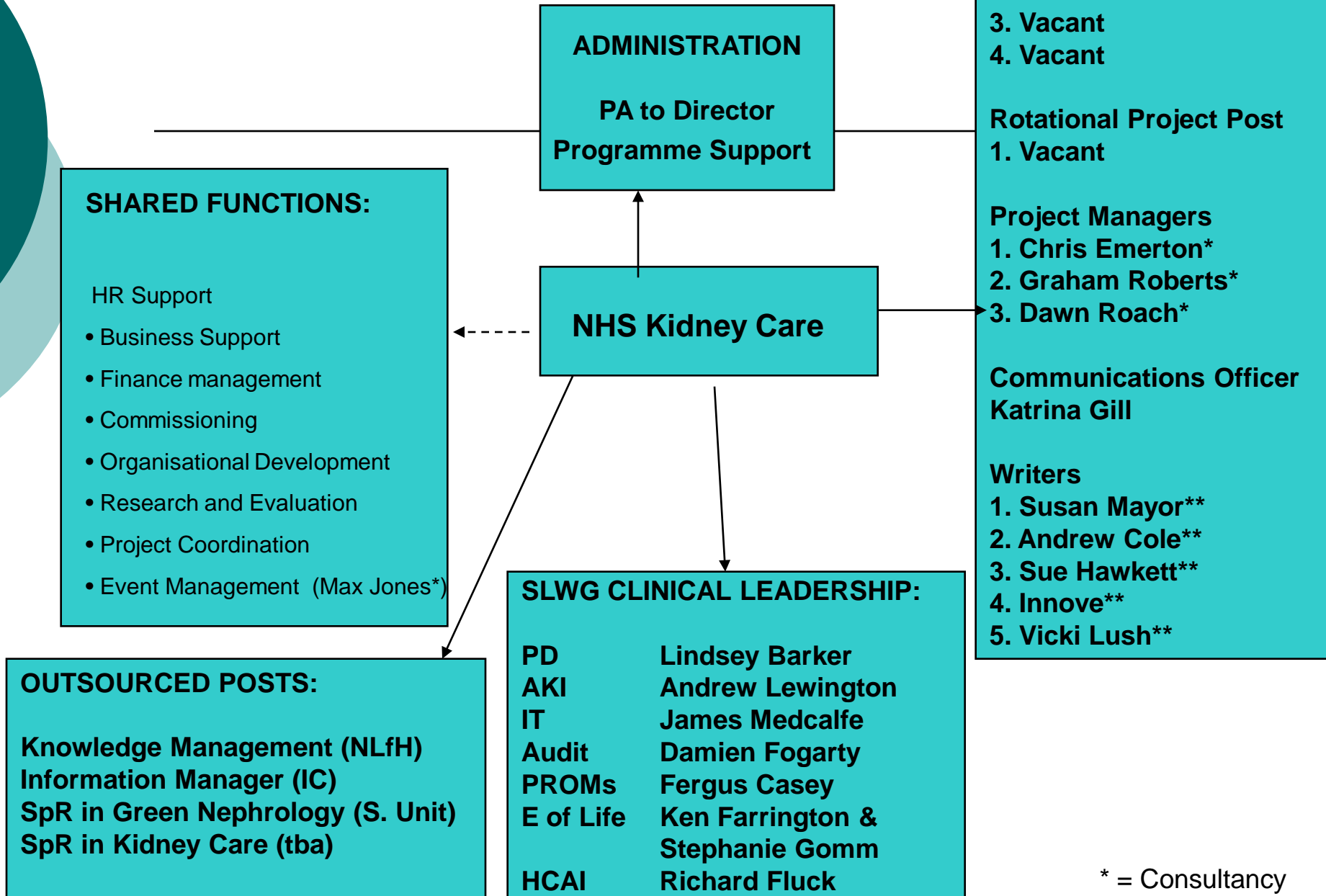




# NHS Kidney Care

Innovations in Kidney Care - ACTIVITIES (DRAFT)																						
	Project Management							National Leads							National Projects							
	Care Plans	PbR for Kidney Dialysis	AKI Audit	Adolescent Transfer	Knowledge Management role	Kidney Informatics Support	Kidney Desmond	Needs Assessment	Investment Model for Early Intervention	Access for Transplant Listing	Project b	project c	project d	project e	project f	project g	project h	18 Week Pathways	Acute Kidney Injury	PbR for Supportive Care	Adolescent Transfer	CKD Management Tools
SHA 1	√	√	√	√	√	√	√										√			√		√
SHA 2	√	√	√	√	√	√	√									√			√			
SHA 3	√	√	√	√	√	√	√								√					√		√
SHA 4	√	√	√	√	√	√	√						√						√			
SHA 5	√	√	√	√	√	√	√					√								√		
SHA 6	√	√	√	√	√	√	√				√								√		√	
SHA 7	√	√	√	√	√	√	√			√								√				√
SHA 8	√	√	√	√	√	√	√		√									√				
SHA 9	√	√	√	√	√	√	√	√										√			√	
SHA 10	√	√	√	√	√	√	√	√													√	

# Organisational Structure



# NHS Kidney Care

---

## Developing Local Kidney Care Networks:

### EXISTING:

West Midlands  
East Midlands  
North West

### SUPPORTING:

North East  
Yorkshire & The Humber  
South West  
East of England  
South East Coast

### Priorities for 09/10:

London  
South Central

# NHS Kidney Care

---

## WORK PROGRAMME:

### Service Development:

- PbR for Kidney Dialysis
- PbR for Kidney Transplantation
- Impact of Organs for Transplant Recommendations
- Service Specification for PD
- Acute Kidney Injury Care Initiative
- Evaluation of increasing Dialysis Capacity (SchARR)
- Toolkit for establishing Autonomous Kidney Services
- Systematic Early Intervention for Kidneys

# NHS Kidney Care

---

## WORK PROGRAMME:

### Patient Experience:

- Template Care Plans
- Kidney Chapter for National EoL Strategy
- Implementing the Kidney Chapter
- PROMs in Kidney Care
- Transition to Adult Care from Paediatric Services
- Educational DVD for Black and Afro-Caribbean people with CKD
- Patient and Carer Strategy

# NHS Kidney Care

---

## WORK PROGRAMME:

### Co-Production:

- Launch Kidney Care Plans on WKD
- Kidney Edition of the BJ Primary Care Nursing
- Kidney Edition of Primary Care Cardiovascular Journal
- E-Consultations
- Primary Care CKD Training
- LCP Pharmacology Report
- Green Nephrology
- NSF Supplement to BJRM
- Renal Technologists Development Programme

# NHS Kidney Care

---

## WORK PROGRAMME:

Being considered:

- Benchmarking Implementation of NSF
- Home Haemodialysis Programme for Children
- Improving access to RPV
- Tool to measure economic impact of early intervention



# NHS Kidney Care

---

Any Questions?